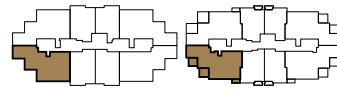


ATLANTIC

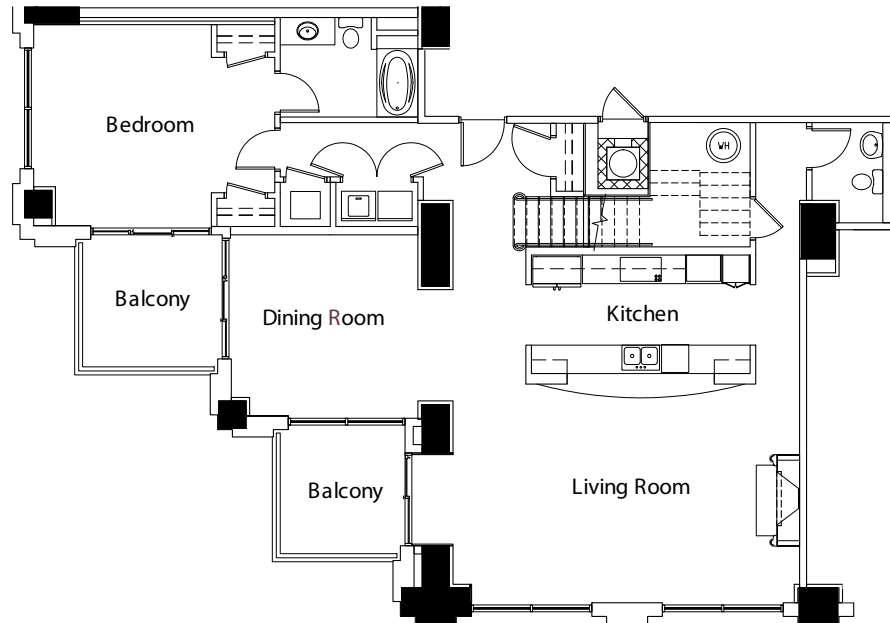
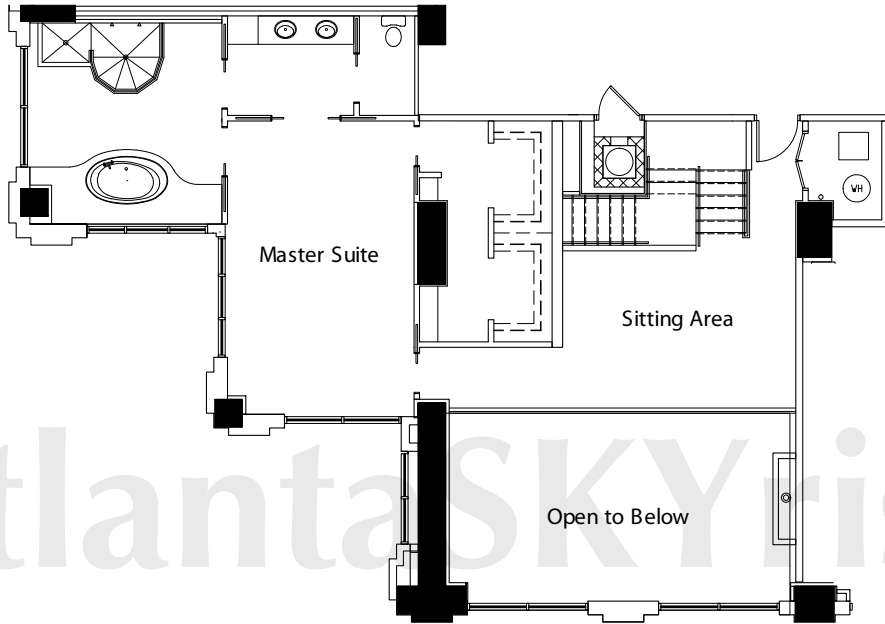
penthouse residence
2 BED · 2½ BATH
APPROX. 2,908 SQ. FT.



P10



atlanta**SKY**rise®
Atlanta Luxury Condos



ORAL REPRESENTATIONS CANNOT BE RELIED UPON AS CORRECTLY STATING REPRESENTATIONS OF THE SELLER. FOR CORRECT REPRESENTATIONS, REFERENCE SHOULD BE MADE TO THIS BROCHURE AND TO THE DOCUMENTS REQUIRED BY CODE § 44-3-111 OF THE GEORGIA CONDOMINIUM ACT TO BE FURNISHED BY THE SELLER TO A BUYER. All dimensions are approximate and vary depending on method of measurement. If Buyers need to know precise measurements before purchasing a home they are urged by the Seller to take their own measurements before entering into a Contract. Buyers are provided with the opportunity to take their own measurements prior to signing a Contract.