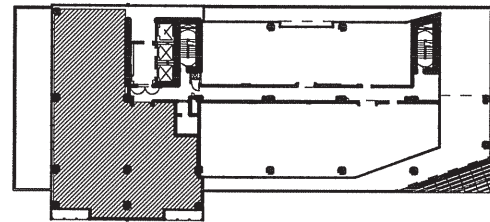
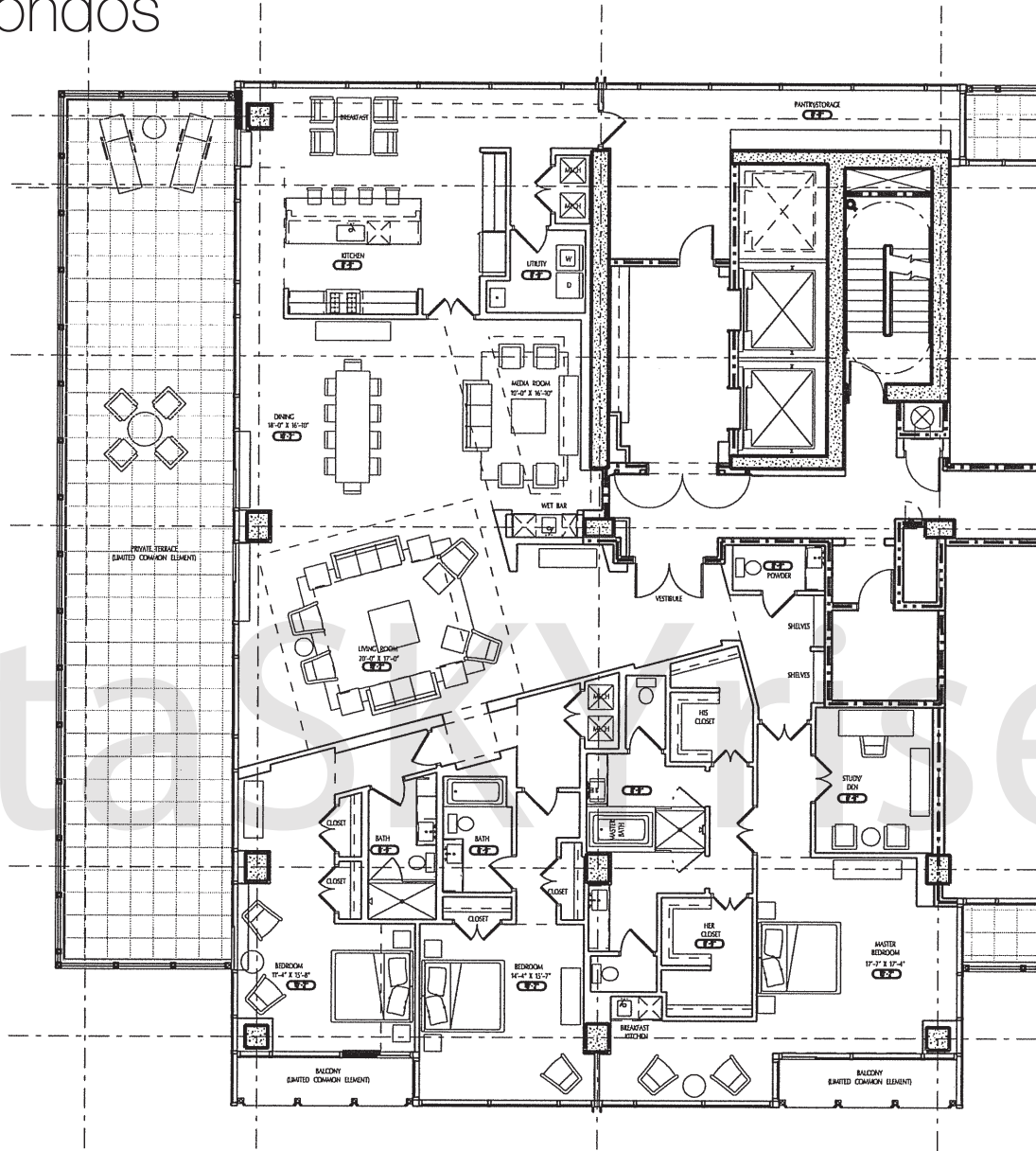




atlantaSKYrise®

Atlanta Luxury Condos



PIEDMONT ROAD

UNIT TYPE: G-1
LEVEL 31
(3 BEDROOM, 3.5 BATH)
APPROXIMATE SALEABLE UNIT AREA: 4,325 SF
APPROXIMATE TERRACE AREA: 1,175 SF

10 TERMINUS PLACE

ATLANTA, GEORGIA



August 1, 2008

This floor plan and the dimensions and square footage calculations shown hereon are only approximations. Any Unit Owner who is concerned about any representations regarding this floor plan should do his/her own investigation as to the dimensions, measurements and square footage of the Unit.